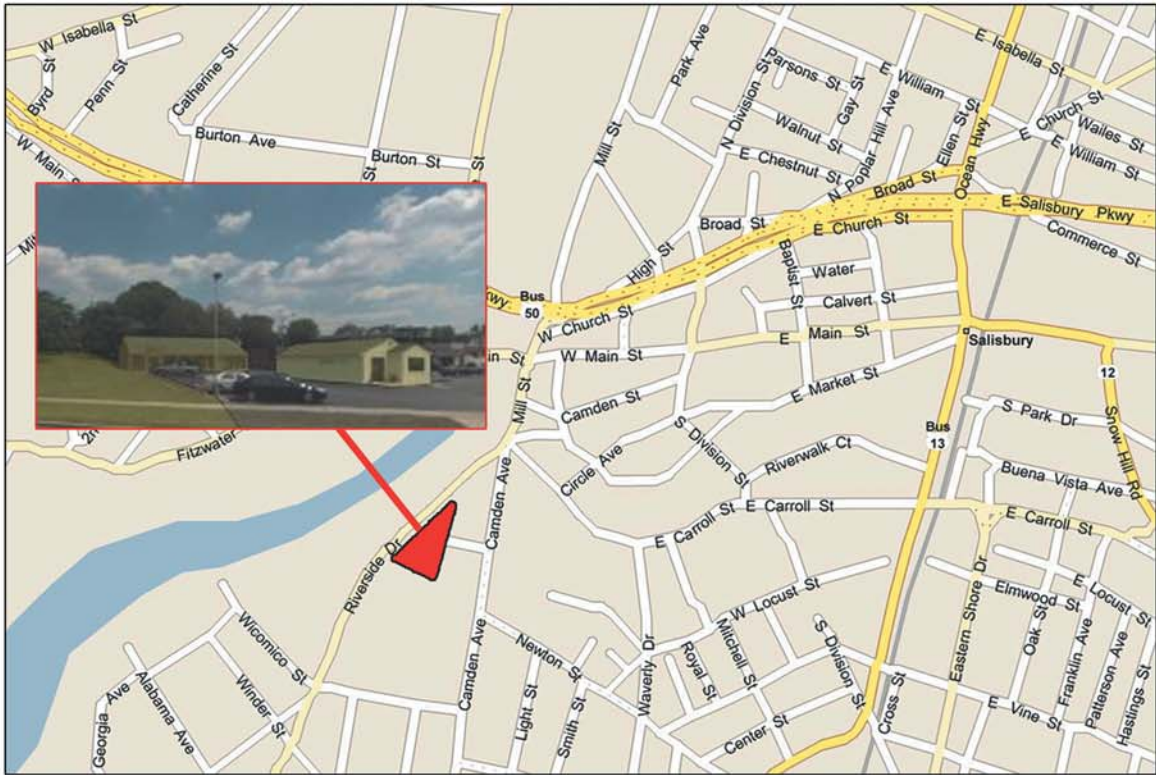


SALISBURY, MARYLAND OFFICE/RETAIL BUILDINGS

RIVERSIDE DRIVE - SALISBURY, MARYLAND



INVESTMENT HIGHLIGHTS:

- 2,600 s.f. office building with two suites built in 1971
- 940 s.f. former bank branch with one drive through built in 1971
- 8 parking spaces
- Two parcels totalling 0.88 acres, one of which is vacant.
- Approximately 266' of frontage along Riverside Drive
- Close proximity to Salisbury and Peninsula Regional Medical Center

