

Prime Retail Space Available

The Clairmont Shopping Center



- ✓ Great Visibility on US 13 – Salisbury’s Busiest Thoroughfare
- ✓ Estimated 30,000 Cars Pass by Each Day on US 13
- ✓ Large Pylon Signage on US 13 w/ Computerized Marquee
- ✓ Less than 1,000 Feet to Salisbury University
 - Estimated enrollment 2006-07 is 7,000 students
- ✓ Join Hollywood Video, Baskin Robbins & Subway

Unit Specifications

Up to 13,390 Sq. Ft.
\$20.00 / Sq. Ft. Net
Commercial Zoning



RINNIER
DEVELOPMENT COMPANY

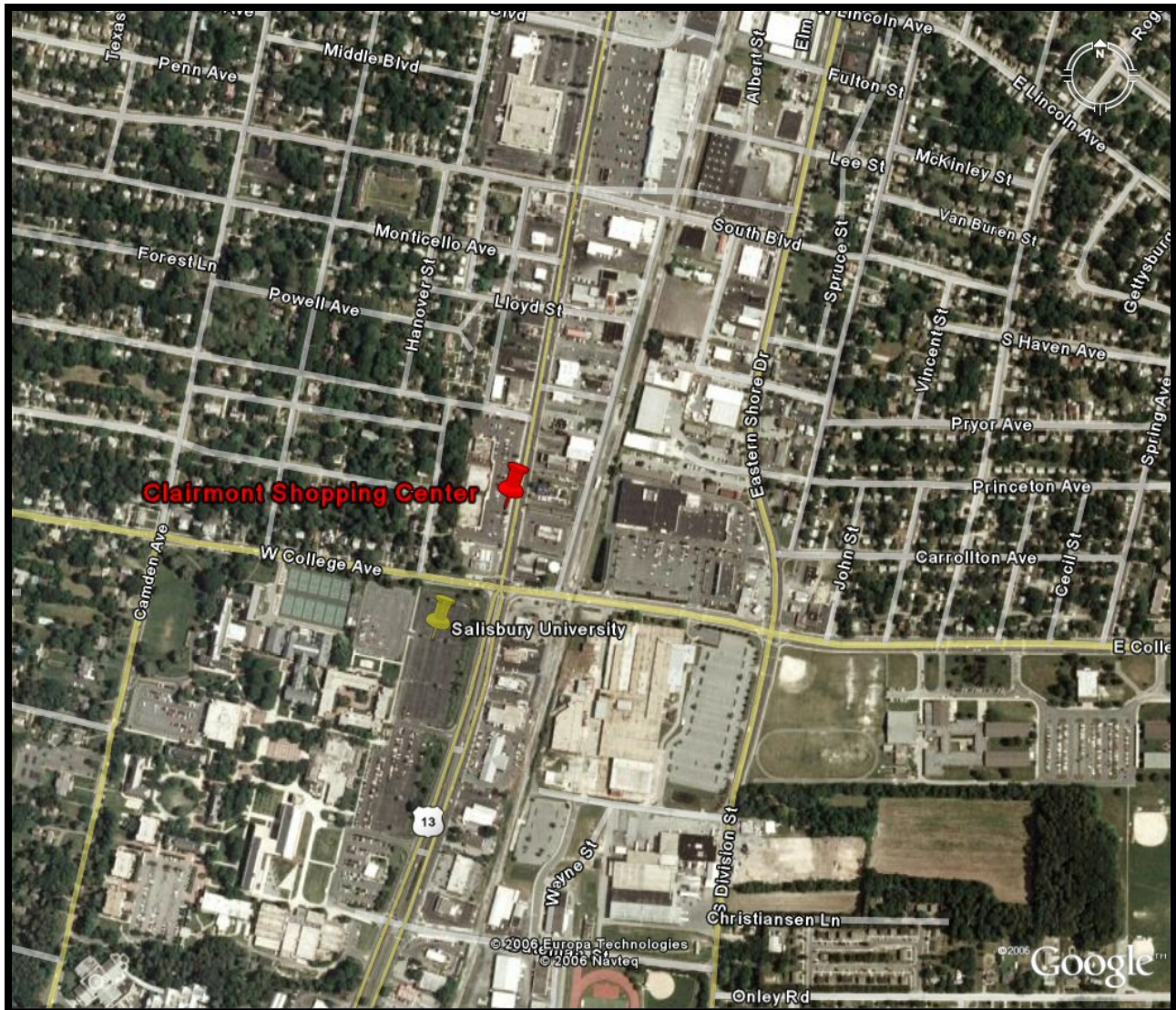
Contact:

Blair Rinnier, CCIM, CPM
(410) 742-8151
www.rinnier.com
brinnier@rinnier.com

BROKERAGE • DEVELOPMENT • PROPERTY MANAGEMENT

Prime Retail Space Available!

The Clairmont Shopping Center Aerial - Close



RINNIER
DEVELOPMENT COMPANY

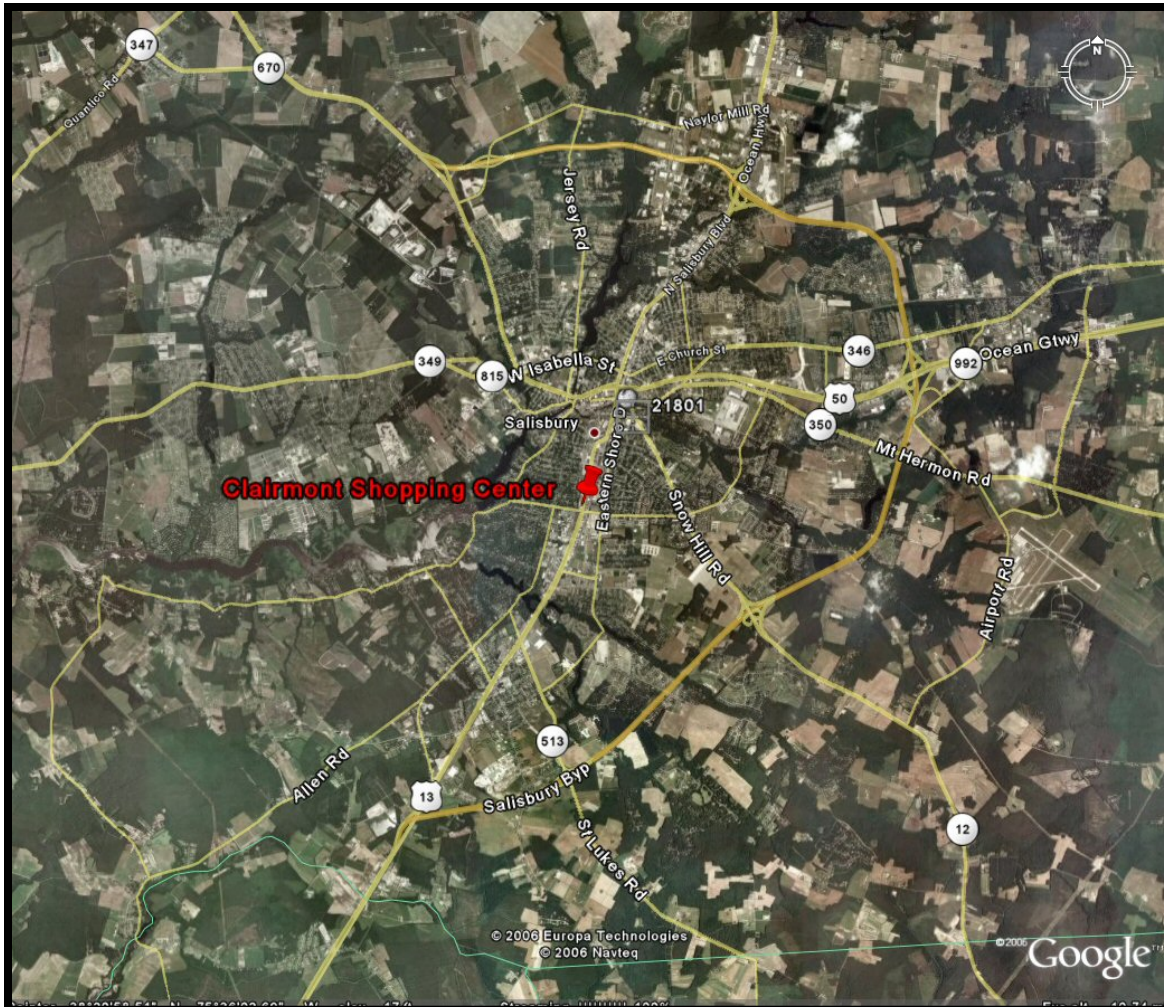
Contact:

Blair Rinnier, CCIM, CPM
(410) 742-8151
www.rinnier.com
brinnier@rinnier.com

BROKERAGE · DEVELOPMENT · PROPERTY MANAGEMENT

Prime Retail Space Available

The Clairmont Shopping Center Aerial - Far



RINNIER
DEVELOPMENT COMPANY

Contact:

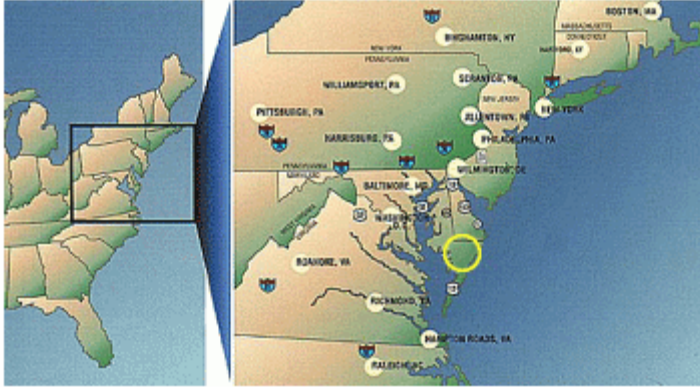
Blair Rinnier, CCIM, CPM
(410) 742-8151
www.rinnier.com
brinnier@rinnier.com

BROKERAGE • DEVELOPMENT • PROPERTY MANAGEMENT

Prime Retail Space Available

Clairmont Shopping Center

About Salisbury, Maryland



Distances to major US cities (in miles):

- Baltimore, MD - 120
- Washington, DC - 120
- Norfolk, VA - 130
- Philadelphia, PA - 120
- New York, NY - 250
- Boston, MA - 550

Wicomico County and Salisbury are located in the heart of the Delmarva Peninsula. The Peninsula gets its name due to the fact that it is made up of portions of three states: Delaware, Maryland and Virginia.

The peninsula is bisected by two major highways, US 50 and US13. Following US 50 West, it is only two hours to Baltimore, I-95, and Washington, DC. Following US13 North, it is two hours to Philadelphia, PA; To the South, two-and-a-half hours to Norfolk, VA.

Salisbury is the county seat of Wicomico County and is located in one of the nation's richest vacation regions. The county offers a variety of higher education learning centers; including the Fulton School of Liberal Arts, Franklin P. Perdue School of Business, Seidel School of Education and Professional Studies, Henson School of Science, The University of Maryland Eastern Shore and Salisbury University.

For more information on Salisbury, MD please visit www.salisburymd.com or www.swed.org.



RINNIER
DEVELOPMENT COMPANY

Listed by:

Blair Rinnier, CCIM, CPM
(410) 742-8151
www.rinnier.com
brinnier@rinnier.com