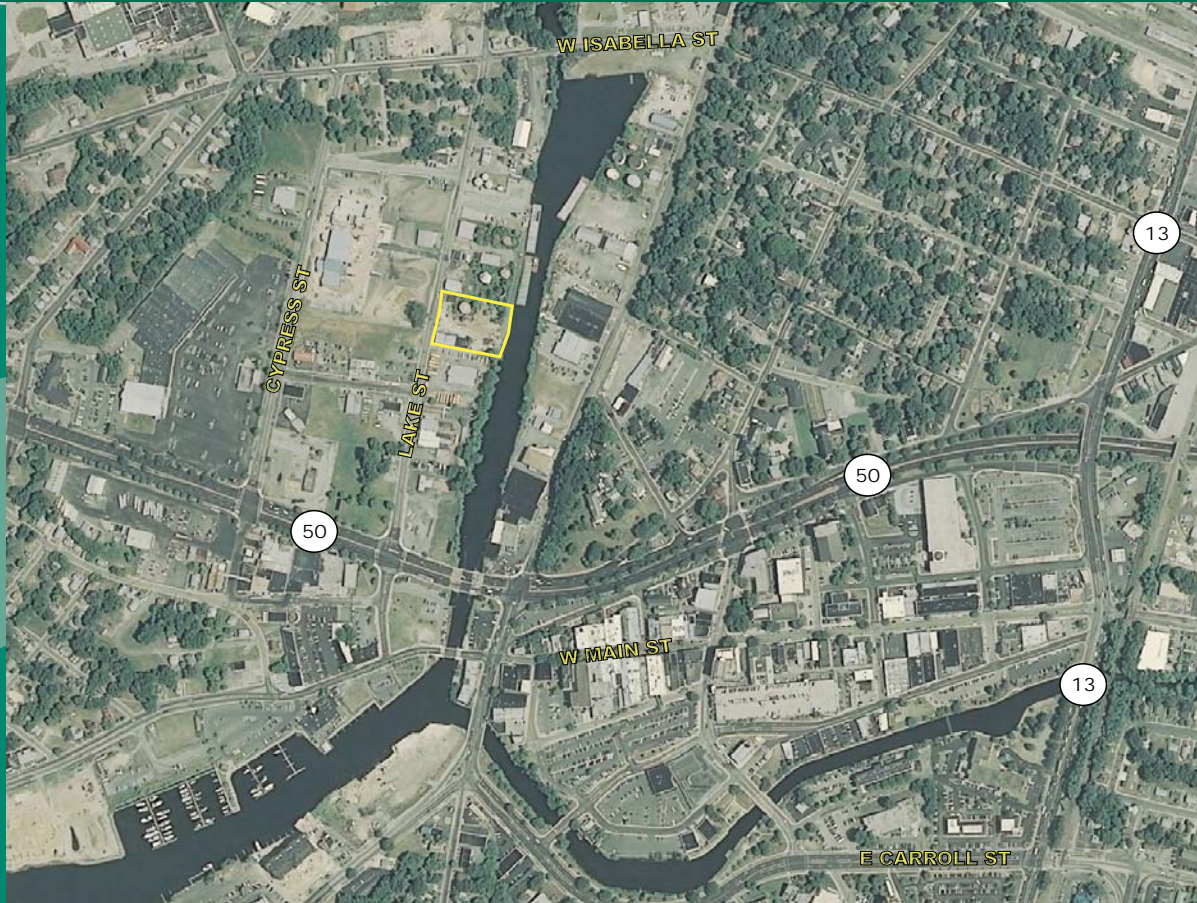


315 LAKE STREET

SALISBURY, MARYLAND 21801

FOR SALE

COMMERICAL/
RESIDENTIAL LOT



For information, contact:

SCHNEIDER COMMERCIAL



Joe Schneider
715-A Eastern Shore Drive
Salisbury, MD 21804
(443) 880-4100
joe@joeschneider.com

www.joeschneider.com

FEATURES

Riverfront redevelopment parcel on the North prong of the Wicomico River. Minutes from Downtown Salisbury, brand new bulkhead, built to accommodate barge traffic. Residential redevelopment of 60 units. 1.365 acres total. Survey on file, call for details.

©2008, CB Richard Ellis, Inc. We obtained the information above from sources we believe to be reliable. However, we have not verified its accuracy and make no guarantee, warranty or representation about it. It is submitted subject to the possibility of errors, omissions, change of price, rental or other conditions, prior sale, lease or financing, or withdrawal without notice. We include projections, opinions, assumptions or estimates for example only, and they may not represent current or future performance of the property. You and your tax and legal advisors should conduct your own investigation of the property and transaction.

CBRE
CB RICHARD ELLIS